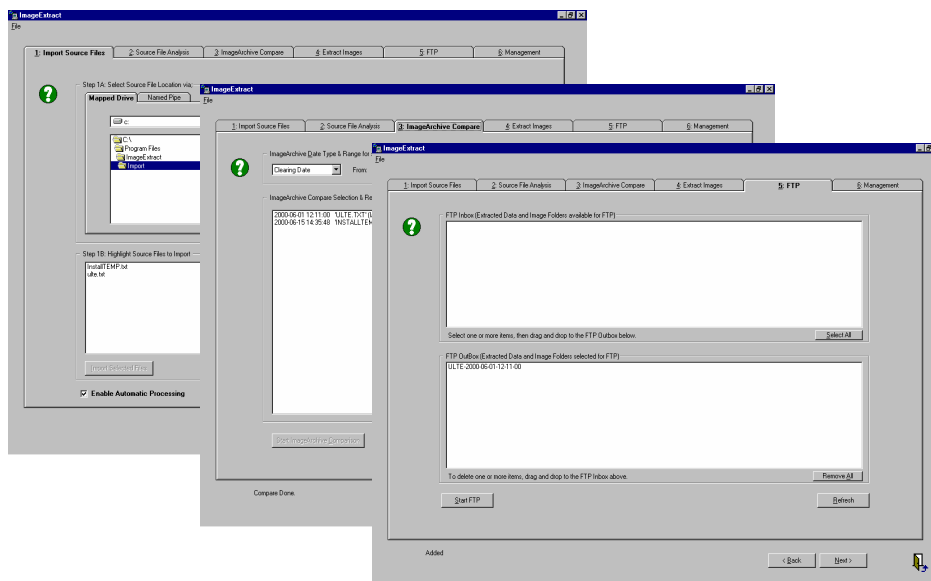


# Image Statement Merge & Print

Contact Innovations' Image Statement Merge & Print is designed to permit the printing of image enabled client statements. Image Statement Merge & Print is used in conjunction with IA Cheque (Limited or Professional) and your financial institution's existing client statements to extract archived items (images & data), then to package and transfer such archived items to a third party printer for statement printing and mailing.

*Just think, no more handling, sorting, filing or storage of client cheques and the 'in-house' manual process of folding, stuffing and mailing of client statements has been eliminated!*



CI's Image Statement Merge & Print has been designed to permit processing of client statement source files individually, or can be set to automatically process multiple source files simultaneously for unattended operation.

The Image Statement Merge & Print's [main window](#) consists of a large 'user-friendly' work area containing six work process tabs. Each numbered tab represents a sequential step in the Image Statement Merge & Print process.

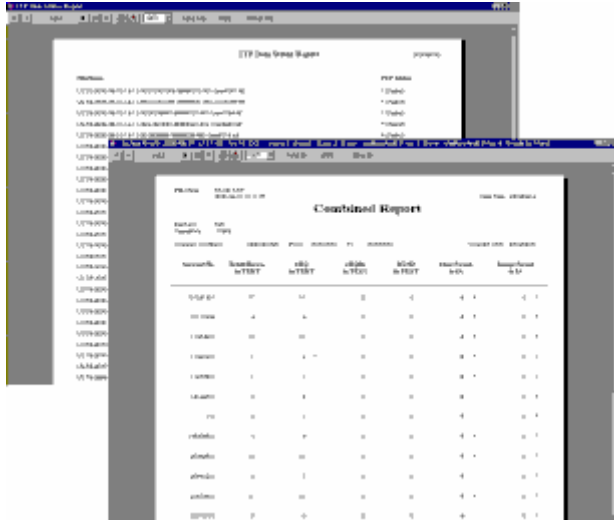
Image Statement Merge & Print quickly and simply guides the user through the following steps:

- **Import source files:** this step produces a listing of client accounts to be processed.
- **Analyze source files:** determines the number of cheque items present for each account listed.
- **Compare the source files:** to image and data information stored in ImageArchive (IA) Repository.
- **Extract** copies images and data to a queue for export to a third party printer.
- **Transfer images and data:** over the Internet to a remote host via FTP or to a network location.
- **Generate reports:** indicating the status of all processing of each file extracted and transferred.

When **Automatic Processing** is enabled, 'Extract' runs through the steps one to four automatically (Import, Analysis, Comparison, and Extract). Automatic Processing can be selected to perform these operations on one or several source files simultaneously. If each source file has unique requirements, the user can disable automatic processing in order to enable manual progression through each step, permitting customization of the for analysis, comparison and extraction parameters.

## Image Statement Merge & Print

As an added convenience, Image Statement Merge & Print can also automatically create an output file of **valid account numbers** based on client account numbers collected from statement source files. These files can be subsequently imported into the ImageArchive's 'IntellAccount' module in order to verify the validity of scanned item's account numbers and reduce or eliminate the possibility of account number errors



**Reports** can be generated and printed at any point in time in order to create a listing of Matched Items, Unmatched Items, or both on a per account basis. These reports can be utilized in conjunction with ImageArchive Retrieval to locate and/or correct archived items. Once such items have been located or corrected, image extraction can be re-run to include such items.

FTP progress reports can be displayed or printed in order to monitor the results of the 'FTP File Transfer' process.

After the images and data have been successfully transferred, they can then be matched and merged with the client's account statements, either in-house or by a third-party service provider. Once the Image Statements have been printed they are ready for automatic folding, envelope stuffing and mailing directly to each client.

### Other features:

- Option to select either Scanning date or Clearing date for file comparison
- Customizable processing procedures
- Processing date range selection
- Acquisition of either front and or back item images for extraction and statement creation

### Recommended Configuration Requirements:

- PC containing Intel Pentium® II or higher processor with 128mb memory
- Windows® 98se, NT, W2000 or XP.
- Internet Explorer 4.0 or higher
- Contact Innovations' IA Cheque Professional or Limited Scanning and Archiving Software
- CD Writer or FTP / LAN connection to third party printer